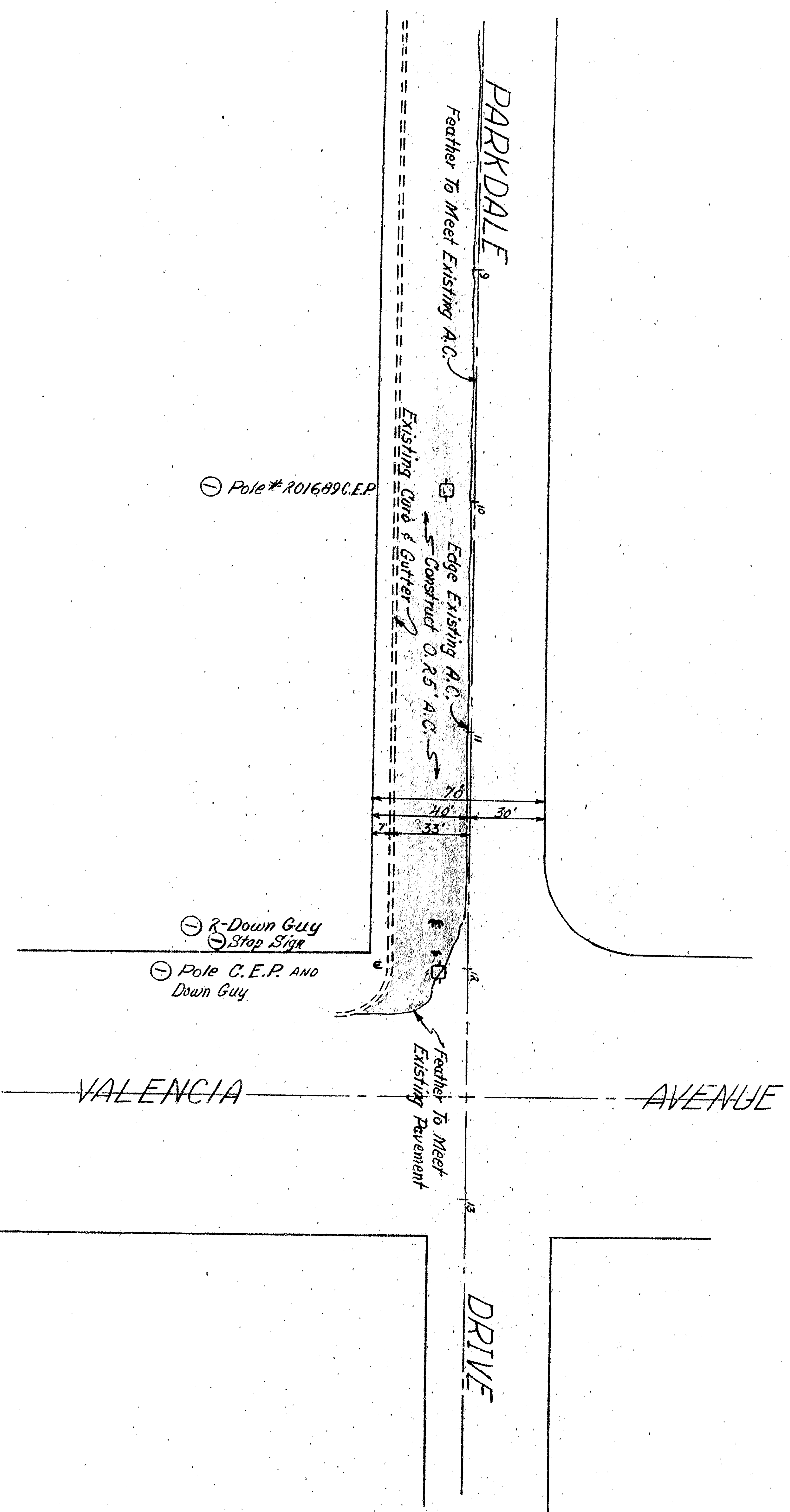
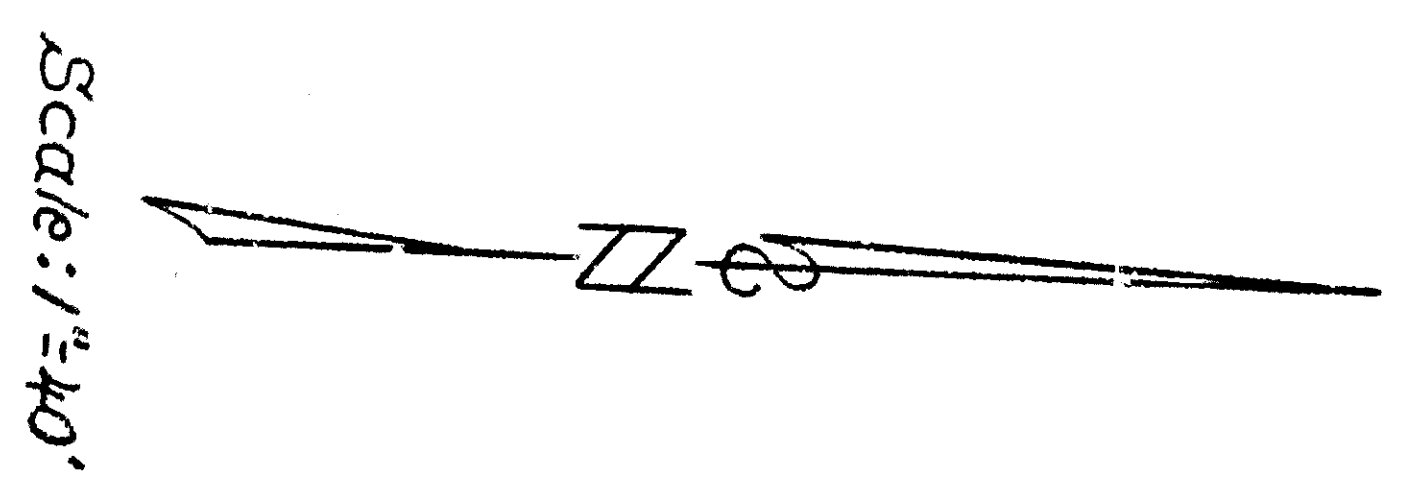
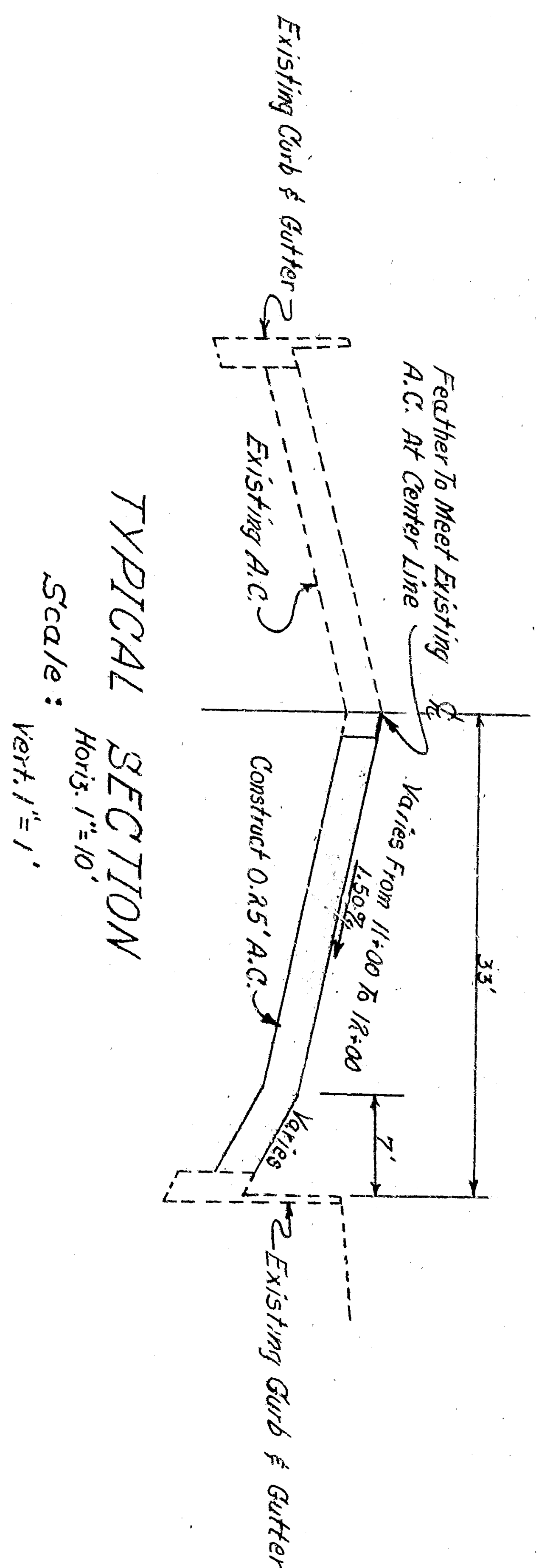
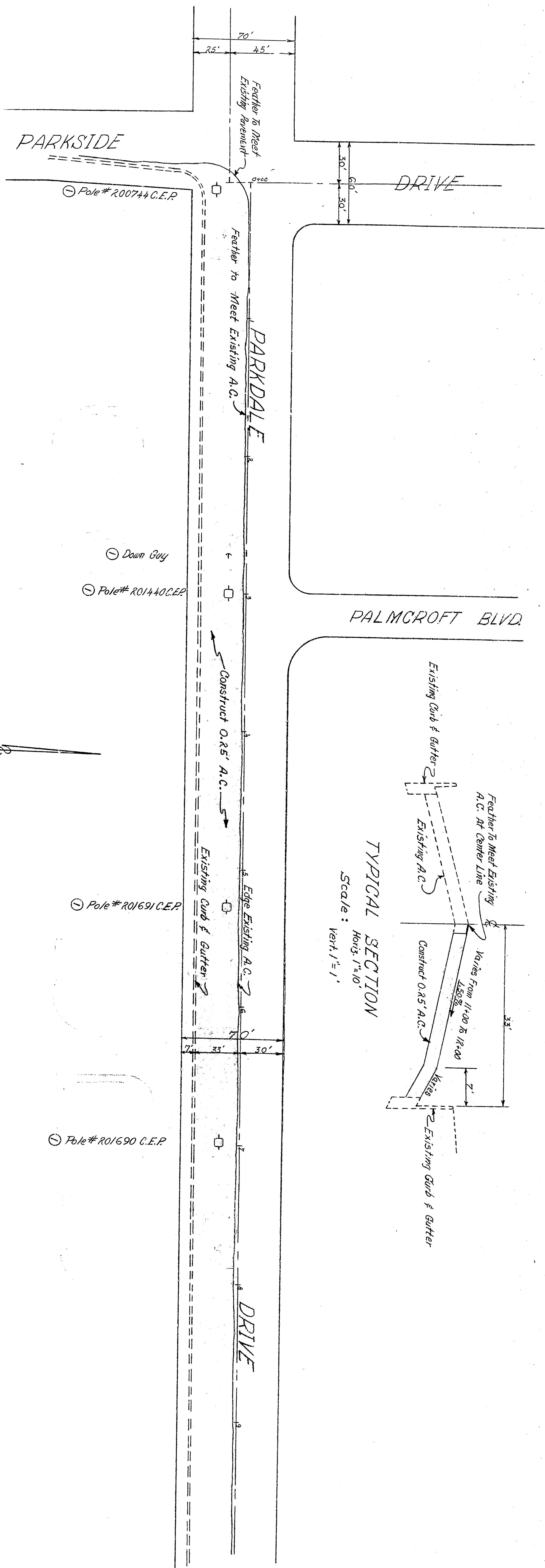


GENERAL NOTES
 1. All work embodied on these Plans shall be done in conformity with Special Provisions No. 3439-A, & applicable provisions of Standard Specifications No. 2477.
 2. Obstructions (Markings on Plan) as directed by Engineer.
 3. To be removed or relocated by others.

BENCH MARK
 Screw NW corner of Parkside Dr
 & Parkside Dr. Elev. 1501.55 MSL

APPROVED	DATE	9/26/88	DEPARTMENT OF ENGINEERING
<i>[Signature]</i>	3/13/88		CITY OF SAN BERNARDINO
REGISTERED CIVIL ENGINEER NO. 28553	DRAWN BY		PAVING
	CHECKED BY		PARKDALE DRIVE
	DESIGNED BY		BETWEEN PARKSIDE DRIVE AND VALENCIA AVENUE
	RECOMMENDED BY		BETWEEN PARKDALE DRIVE AND A POINT 1450' SOUTH



GENERAL NOTES
 1. All work embodied on these Plans shall be done in conformity with Special Provisions No. 3439-A, & applicable provisions of Standard Specifications No. 2477.
 2. Obstructions (Markings on Plan) as directed by Engineer.
 3. To be removed or relocated by others.

BENCH MARK
 Screw NW corner of Parkside Dr
 & Parkside Dr. Elev. 1501.55 MSL

APPROVED	DATE	9/26
<i>[Signature]</i>	DATE	
REGISTERED CIVIL ENGINEER NO. 28553		
DRAWING NO. DRAWN BY		
3439-A CHECKED BY		
SHEET 1 OF 2 SHEETS	RECOMMENDED	

DEPARTMENT OF ENGINEERING
 CITY OF SAN BERNARDINO
 PARKDALE DRIVE
 BETWEEN PARKSIDE DRIVE AND VALENCIA AVENUE
 BETWEEN PARKDALE DRIVE AND A POINT 1450' SOUTH